

MIAMILANO

Contemporary Home Design

MIAMILANO

MIAMILANO è più di un marchio.
E' una filosofia, un viaggio attraverso la materia,
dove ogni superficie racconta un'idea di bellezza
autentica e raffinata.

Un brand che nasce dall'esperienza, cresce
con la passione e guarda al futuro con una visione chiara:
creare spazi che parlino di emozione, natura e armonia.

*MIAMILANO is more than a brand.
It is a philosophy, a journey through matter,
where each surface tells an idea of authentic
and refined beauty.
A brand that is born from experience, grows
with passion and looks to the future with a clear vision:
to create spaces that speak of emotion, nature and harmony.*

INDEX

ANALOGICA.25

- 12 Marmo
- 15 Marmo - Murabba Milano
- 21 Murabba Milano - Pattern
- 22 Intreccio di Marmo
- 31 Intreccio di Marmo - Pattern
- 35 Eclissi
- 42 Cementine Eclissi
- 43 Cementine Eclissi - Pattern
- 48 Intreccio di Terracotta
- 53 Intreccio di Terracotta - Pattern
- 56 Terracotta
- 57 Terracotta - Pattern
- 60 Tessera
- 70 Cotto

ANALOGICA.25

The authentic beauty of natural surfaces

MARMO

CEMENTINE

TERRACOTTA

TESSERA

COTTO



LEPANTO

The image features a dark, textured background with a central, lighter, irregular shape that resembles a map of Guatemala. The texture is composed of small, overlapping, leaf-like or scale-like elements, giving it a rough, organic appearance. The central shape is a lighter shade of greenish-brown, contrasting with the darker, almost black surrounding areas. The overall effect is that of a stylized, textured map.

GUATEMALA

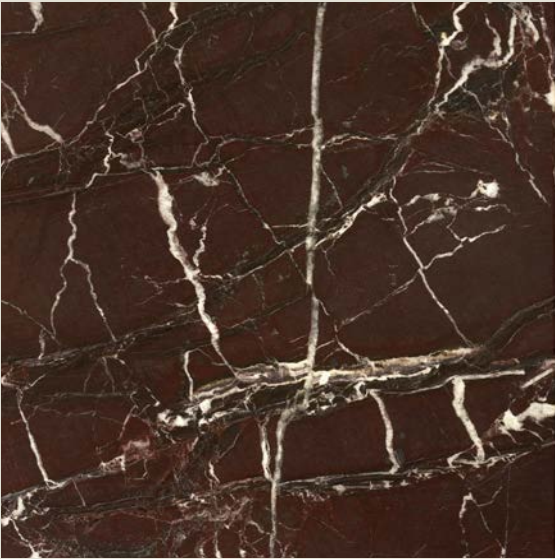
PERSIANO

AMANI

MARMO

Silk finish

Thickness 20 mm



Lepanto



Guatemala



Persiano



Amani

MARMO

Silk finish

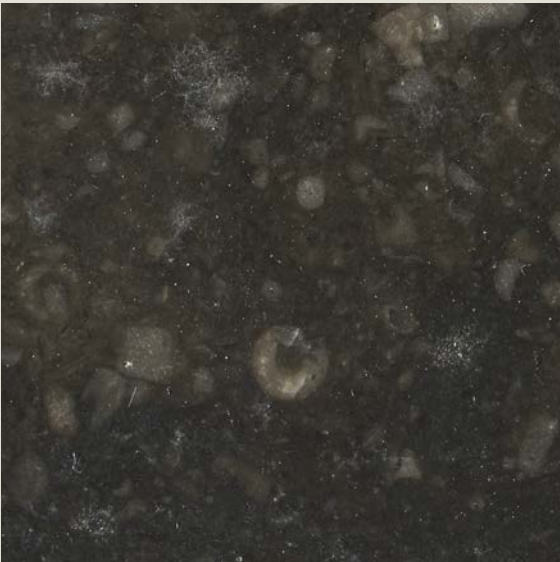
Thickness 20 mm



Biancone



Caffè Amaro



Blue Stone



Havana



MURABBA MILANO

designed by Giò Forma

Progettato dallo studio Gio' Forma, Murabba - che in arabo significa "piazza" o "quadrato" - è un pavimento intarsiato in marmo e pietra calcarea. Ispirato alla piazza come luogo d'incontro, il suo motivo geometrico riflette i principi salmani e l'eleganza senza tempo del mondo arabo.

Designed by milanese studio Gio' Forma, Murabba - which in arabic means "square" or "square" - is an inlaid marble and limestone floor. Inspired by the square as a meeting place, its geometric pattern reflects the salmani principles and timeless elegance of the arabian world.



MURABBA MILANO by Giò Forma
MARMO
LEPANTO AMANI PERSIANO



MURABBA MILANO

MARMO

LEPANTO AMANI PERSIANO

MURABBA MILANO è un pattern sofisticato, nato dalla composizione di elementi geometrici puri - triangoli e quadrati - che si intrecciano in un ritmo continuo e armonico, per superfici dal carattere deciso ed elegante. Ogni composizione di MURABBA MILANO è unica: l'utilizzo e la disposizione dei diversi marmi della collezione MIAMILANO trasformano il modulo, che assume di volta in volta un aspetto completamente nuovo.

MURABBA MILANO is a sophisticated model, born from the composition of pure geometric elements - triangles and squares - that intertwine in a continuous and harmonious rhythm, for surfaces with a strong and elegant character. Each composition of MURABBA MILANO is unique: the use and arrangement of the different marbles of the MIAMILANO collection transform the module, which takes on a completely new appearance each time.



MARMO MURABBA MILANO

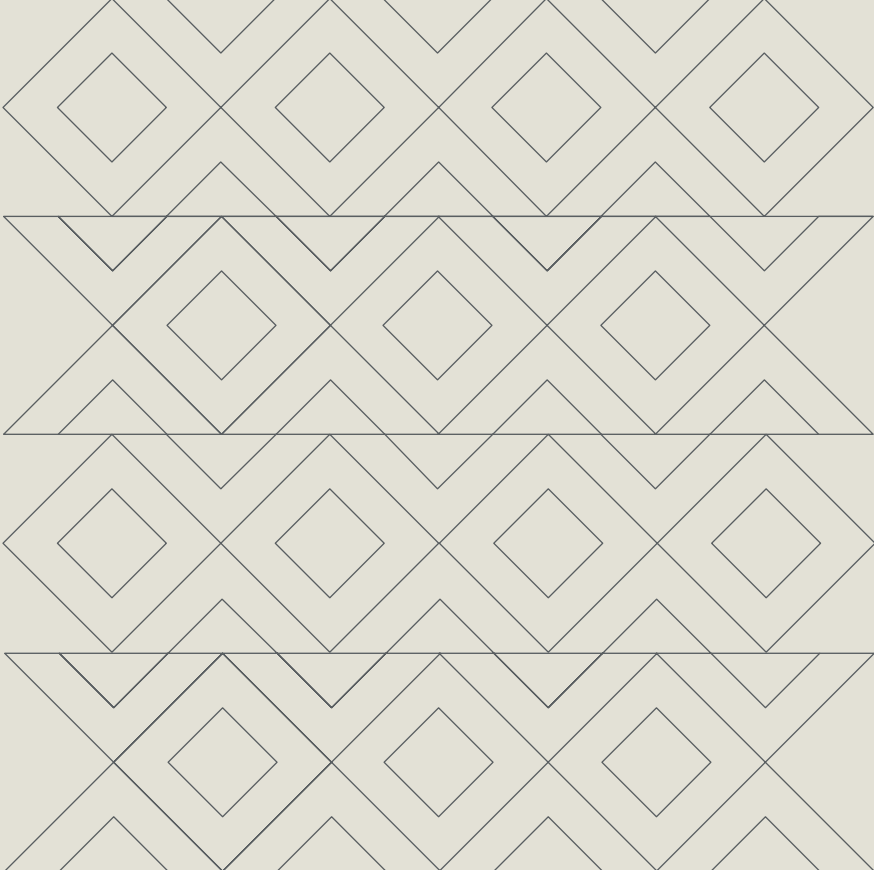
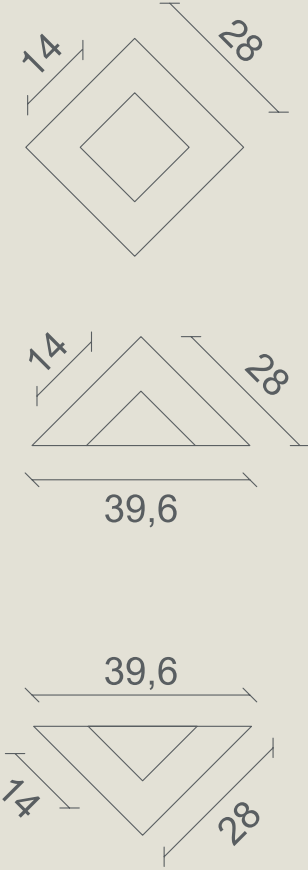
Lepanto Amani Persiano

Thickness 20 mm



MARMO MURABBA MILANO

Pattern



INTRECCIO DI MARMO

L'intreccio di due o più marmi per un modulo versatile e personalizzato. Infinite combinazioni che si adattano ad ambienti classici, contemporanei ed esclusivi.

The intertwining of two or more marbles for a versatile and customized module. Infinite combinations that adapt to classic, contemporary and exclusive environments.



**INTRECCIO
PERSIANO AMANI
LEPANTO**



**INTRECCIO
PERSIANO AMANI**



**INTRECCIO
PERSIANO LEPANTO**

INTRECCIO DI MARMO FUSION

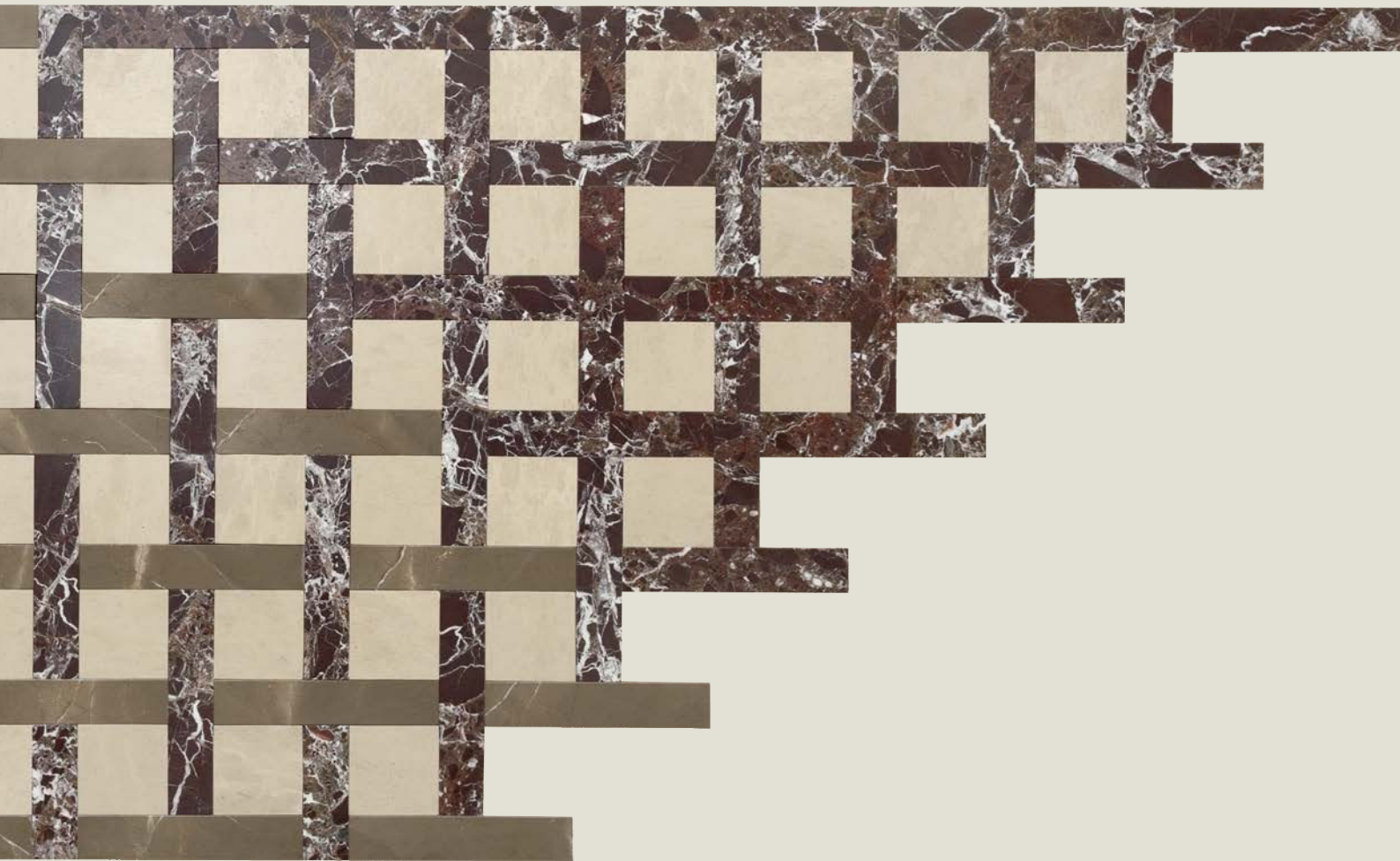
Un disegno materico che nasce dall'incontro armonico di due o più marmi, selezionati in gradazione o contrasto a seconda del progetto.

La composizione si sviluppa partendo da due elementi, si apre a tre e ritorna a due, dando vita a un intreccio elegante e dinamico.

Ogni combinazione è altamente personalizzabile, pensata per adattarsi con equilibrio e continuità a ogni visione progettuale.

A textural design that arises from the harmonious meeting of two or more marbles, selected in gradation or contrast depending on the design.

The composition develops from two elements, opens to three and returns to two, creating an elegant and dynamic weave. Each combination is highly customizable, designed to adapt with balance and continuity to any design vision.

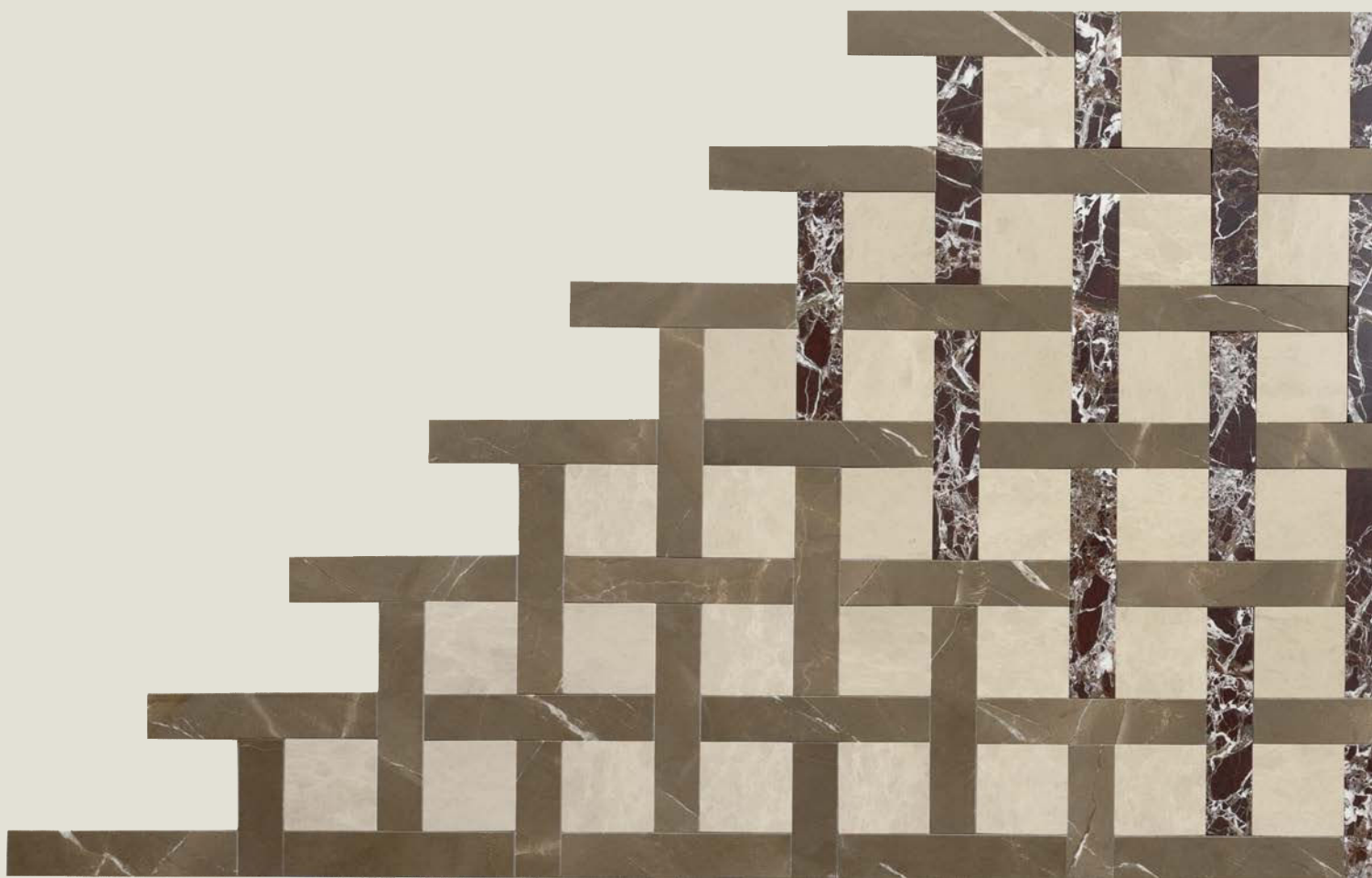


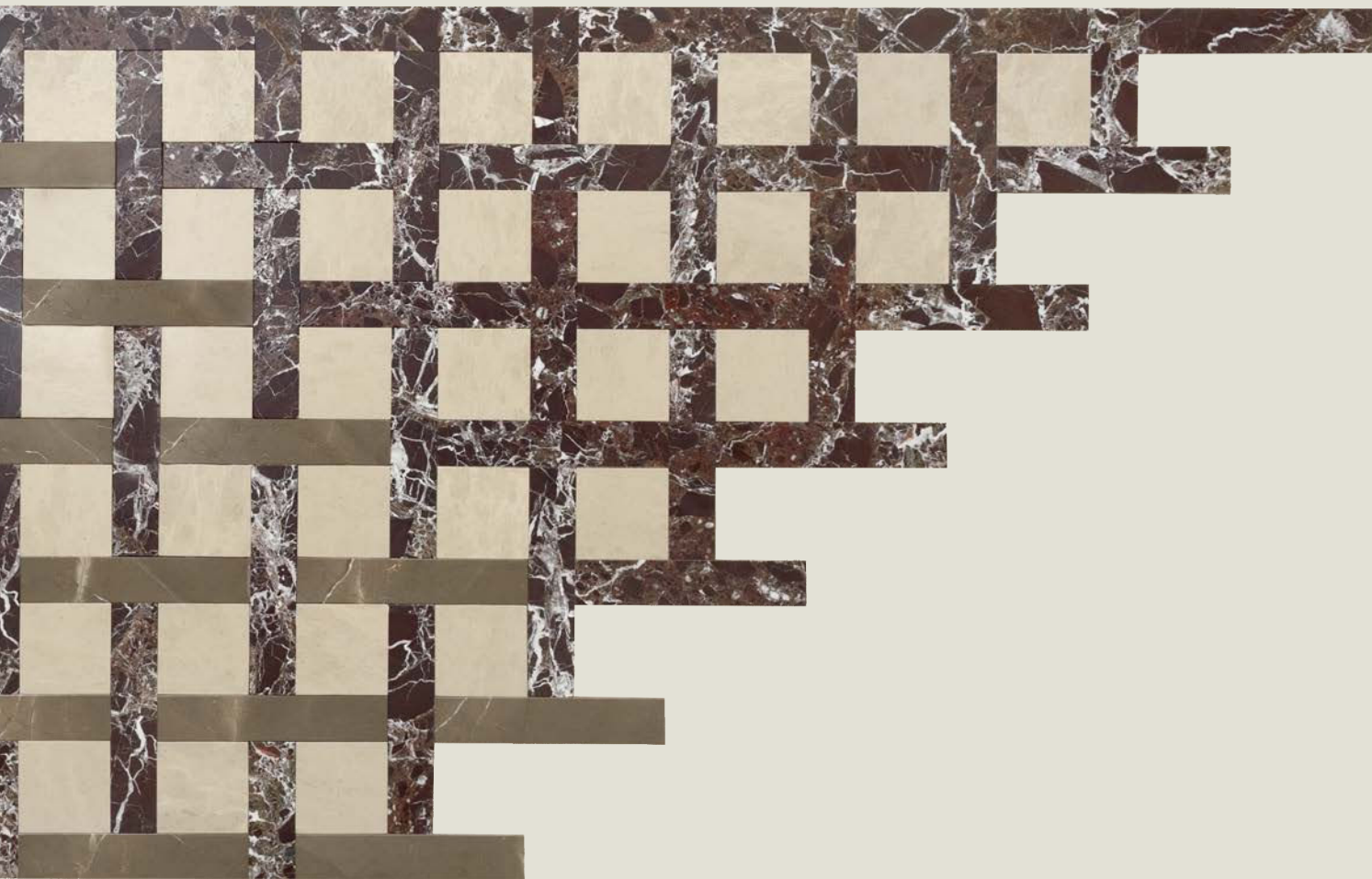
INTRECCIO DI MARMO FUSION

MODULO 10

Lepanto Amani Persiano

Thickness 20 mm

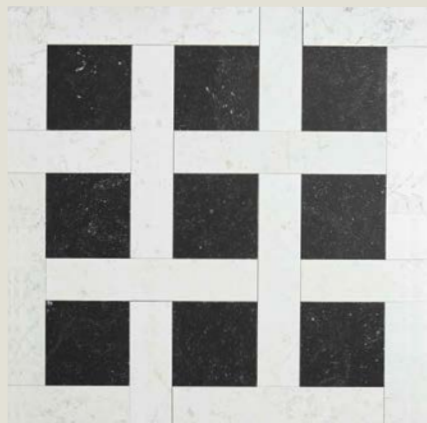




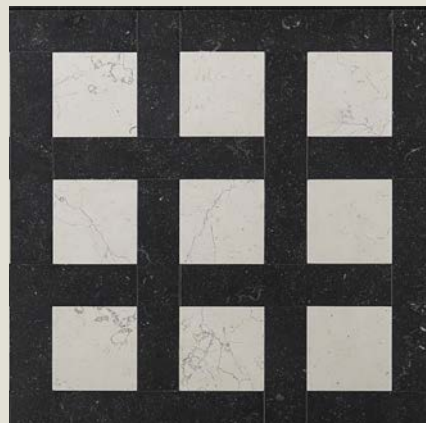
INTRECCIO DI MARMO

MODULO 10

Thickness 20 mm



**Blue Stone
Bianco**



**Bianco
Blue Stone**



**Bianco Blue Stone
Guatemala**



**Persiano Amani
Lepanto**



**Persiano
Amani**



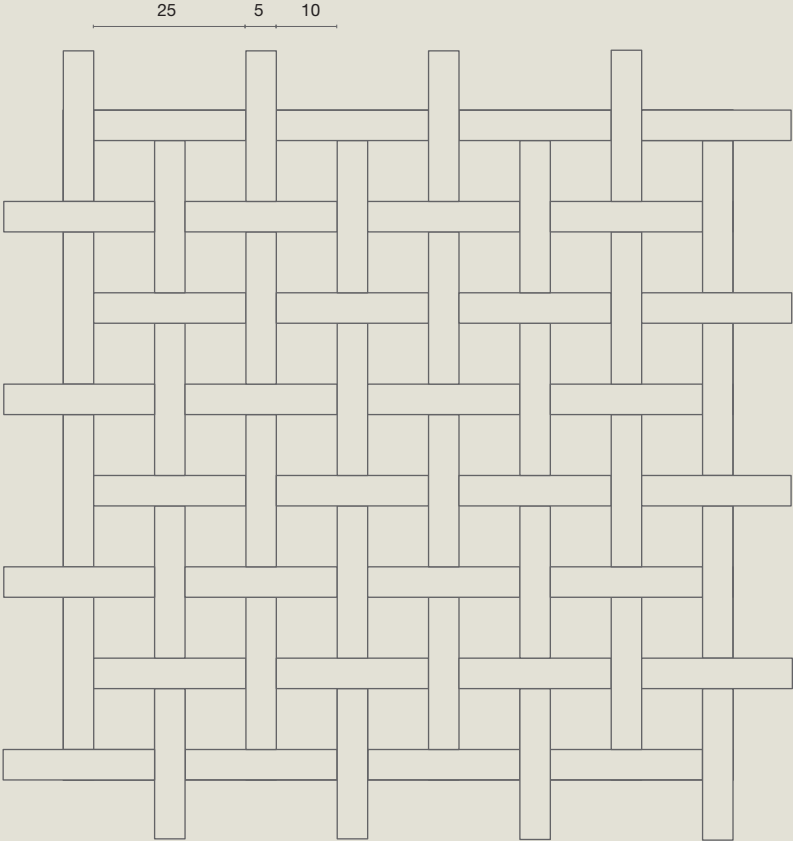
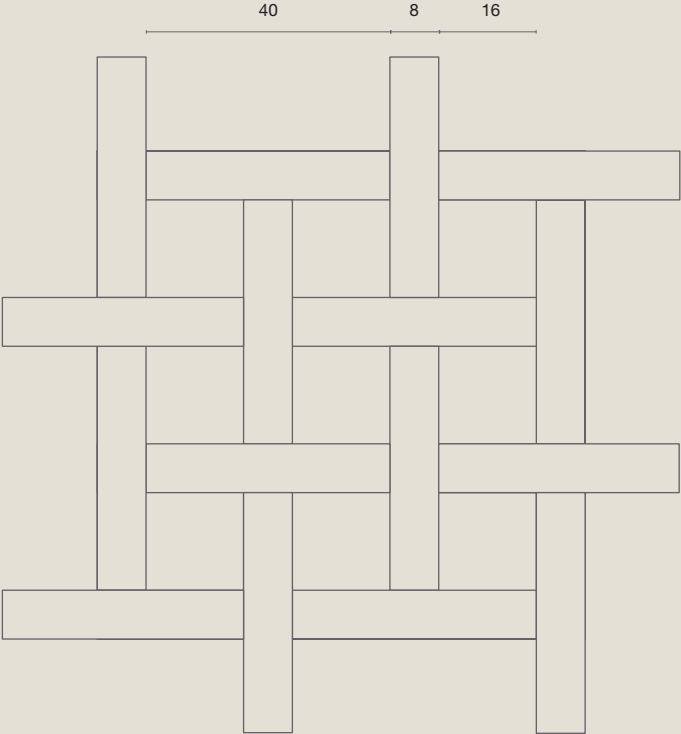
**Persiano
Lepanto**

MARMO

INTRECCIO DI MARMO

Pattern

Modulo 16



Modulo 10

ANALOGICA.25

The authentic beauty of natural surfaces

MARMO
CEMENTINE
TERRACOTTA
TESSERA
COTTO



Ph credits: Lea Anouchinsky

Dainellistudio

ECLISSI

designed by Dainelli Studio

Una fusione tra fascino senza tempo delle geometrie degli anni '40 e '50 con un design contemporaneo.

Ispirate alle opere iconiche dei maestri dell'architettura e del design come Piero Portaluppi e Gio Ponti, le superfici reinterpretano i classici motivi geometrici in chiave moderna.

Un omaggio al passato ed un ponte tra epoche diverse, attraverso un'armonizzazione di forme e colori, dove l'eleganza del disegno diventa protagonista.

A fusion between the timeless charm of the geometries of the 40s and 50s with contemporary design.

Inspired by the iconic works of the masters of architecture and design such as Piero Portaluppi and Gio Ponti, the surfaces reinterpret their classic motifs and geometries in a modern key.

A tribute to the past and a bridge between different eras through a harmonization of shapes and colors, where the elegance of the design becomes the protagonist.



ECLISSI by Dainelli Studio
CEMENTINE
GRANATA LATTE CACAO



Dainellistudio

ECLISSI

CEMENTINE

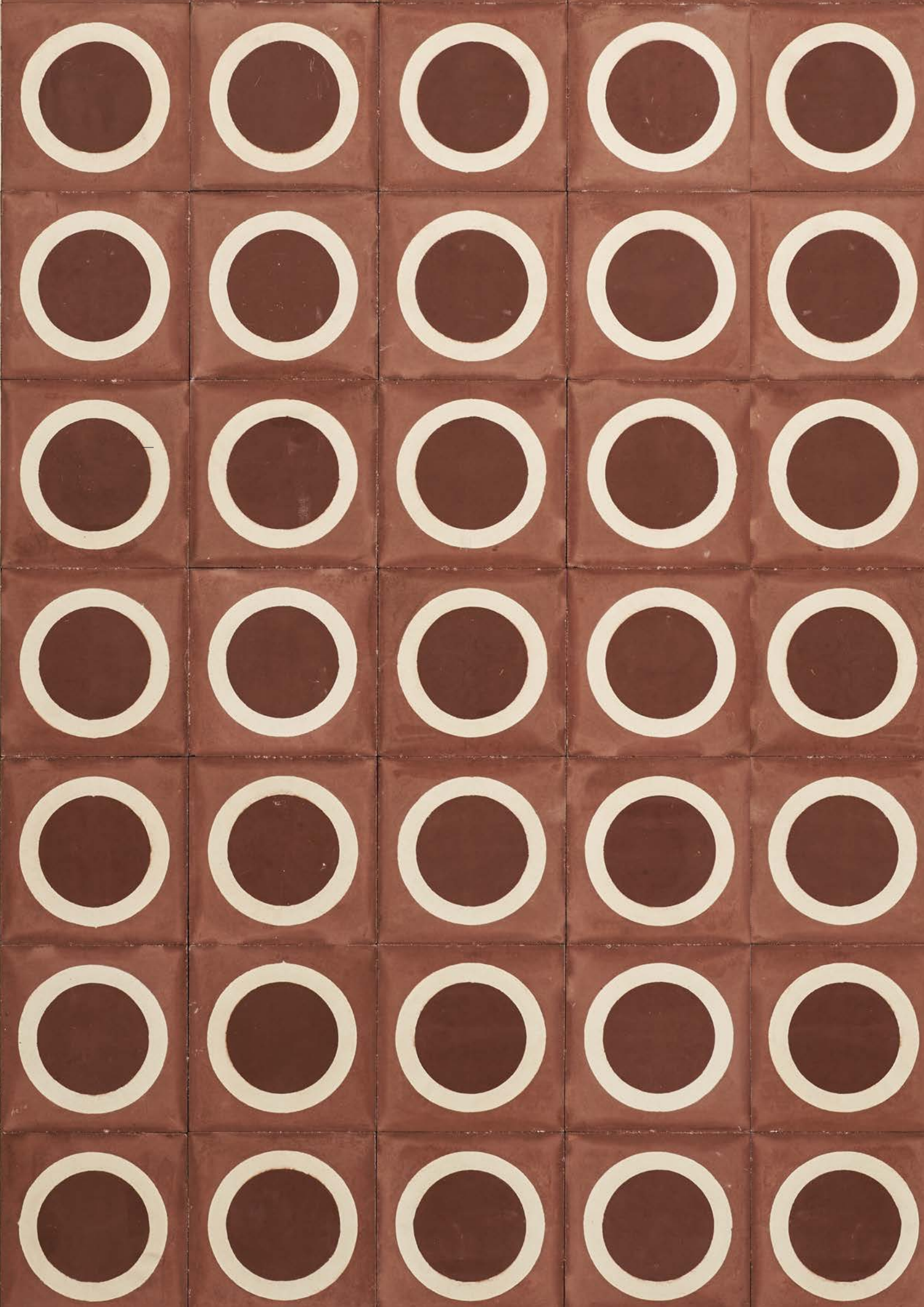
GRANATA NERO LATTE



ECLISSI

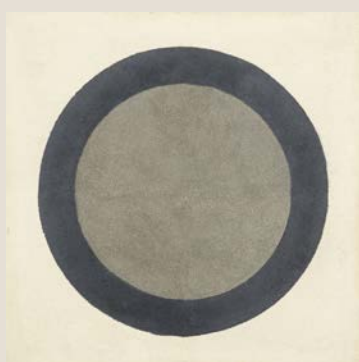
CEMENTINE

GRANATA LATTE CACAO



CEMENTINE ECLISSI

Thickness 20 mm



**Cenere
Nero Latte**



**Latte
Nero Havana**



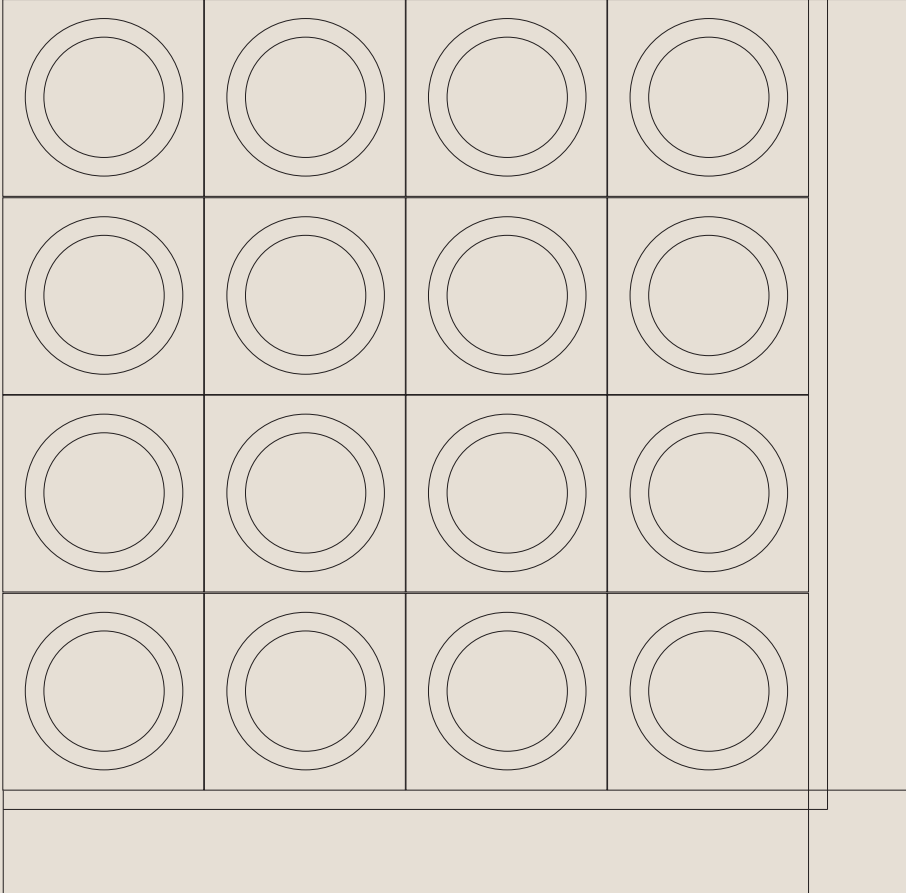
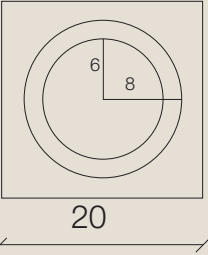
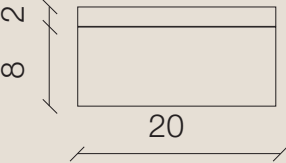
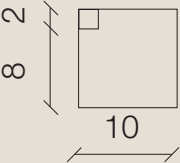
**Granata
Latte Cacao**



**Granata
Nero Latte**

CEMENTINE ECLISSI

Pattern



ANALOGICA.25

The authentic beauty of natural surfaces

MARMO
CEMENTINE
TERRACOTTA
TESSERA
COTTO



INTRECCIO DI TERRACOTTA
LATTE HAVANA NERO



INTRECCIO DI TERRACOTTA
CUSTOM MARBLE

MIAMILANO
Contemporary Home Design

INTRECCIO DI TERRACOTTA

L'intreccio di due o più colori di terracotta per un modulo versatile e personalizzato. Infinite combinazioni che si adattano ad ambienti classici, contemporanei ed esclusivi.

The intertwining of two or more colors of terracotta for a versatile and customized module. Infinite combinations that adapt to classic, contemporary and exclusive environments.



**INTRECCIO
LATTE NERO
HAVANA**

The background is a grid of rectangular tiles. The tiles are arranged in a pattern of black, beige, and brown colors. The black tiles are located at the top-left, top-right, and bottom-right corners, as well as in a vertical strip on the left side. The beige tiles are located at the top-center, top-right, and bottom-center. The brown tiles are located at the top-left, top-right, and bottom-left. The tiles have a textured, slightly rough surface.

**INTRECCIO
HAVANA LATTE
NERO**



**INTRECCIO
NERO HAVANA
LATTE**

INTRECCIO DI TERRACOTTA

MODULO 10

Thickness 20 mm



**Nero
Havana Latte**



**Havana
Latte Nero**

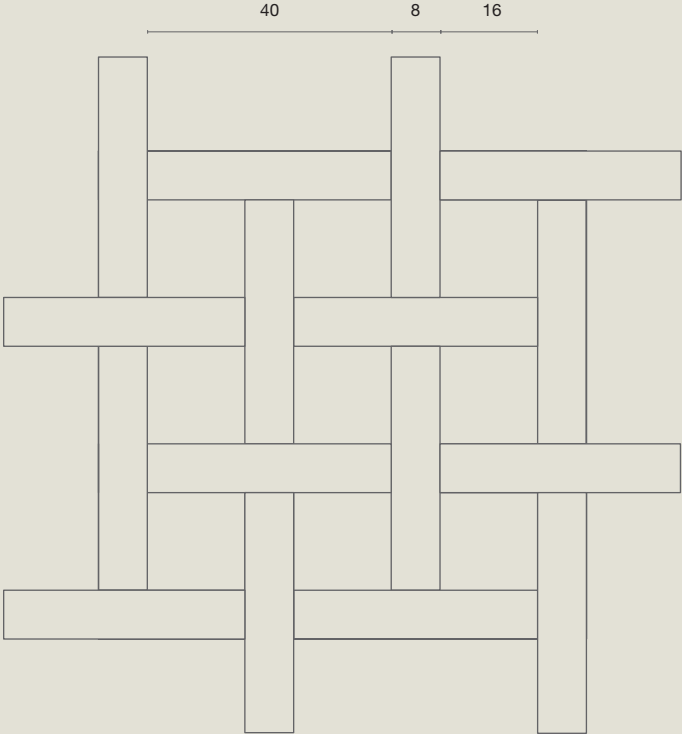


**Latte
Nero Havana**

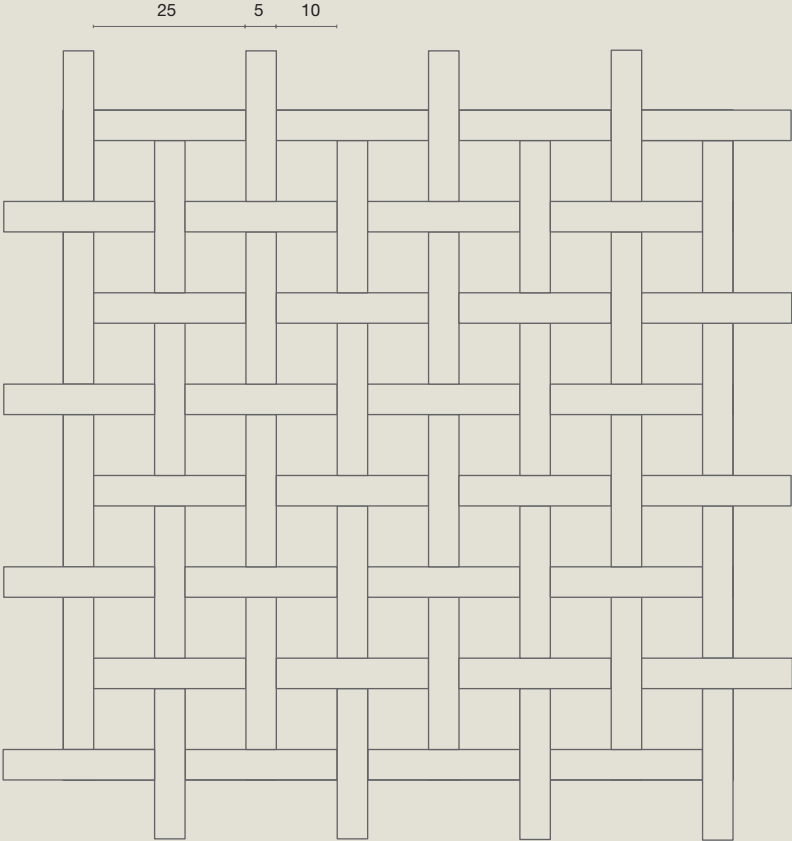
INTRECCIO DI TERRACOTTA

Pattern

Modulo 16



Modulo 10





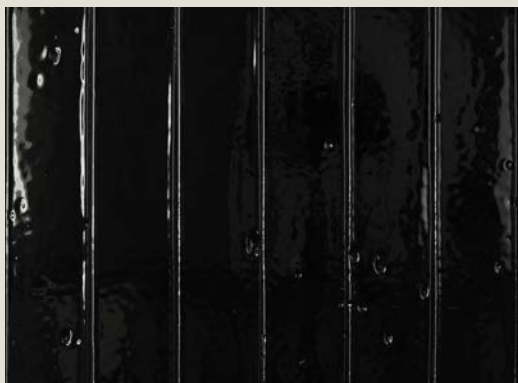
**TERRACOTTA
HAVANA**
SPINA ITALIANA 8x40
QUADRATO 10x10



MIAMILANO
Contemporary Home Design

TERRACOTTA

Thickness 20 mm



Nero Lux Glazed - 5x30



Nero Matt Glazed - 5x30



Latte Lux Glazed - 5x30



Latte Matt Glazed - 5x30



Caffè - 5x30



Havana - 5x30



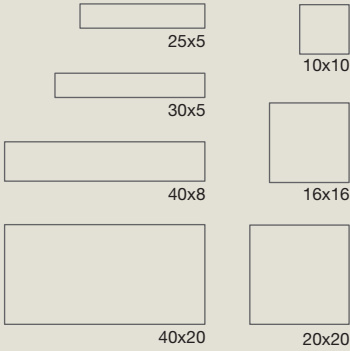
Vaniglia - 5x30



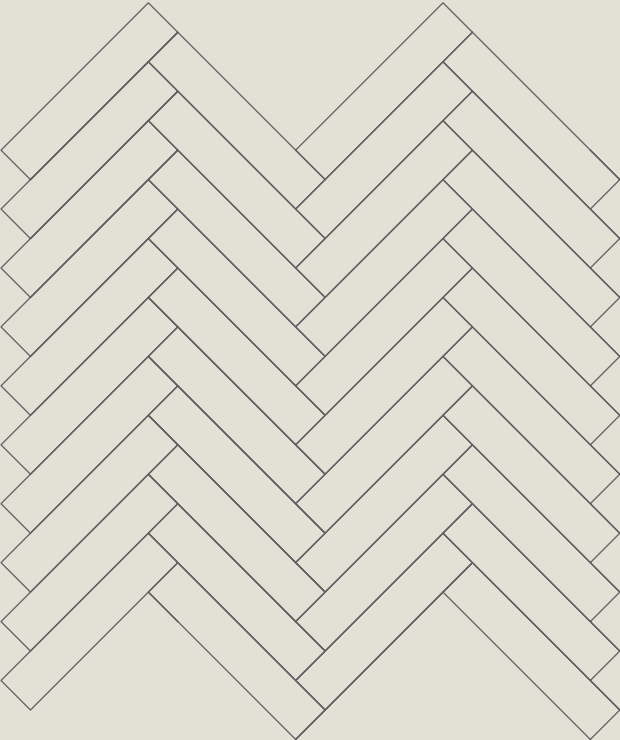
Cenere - 5x30

TERRACOTTA

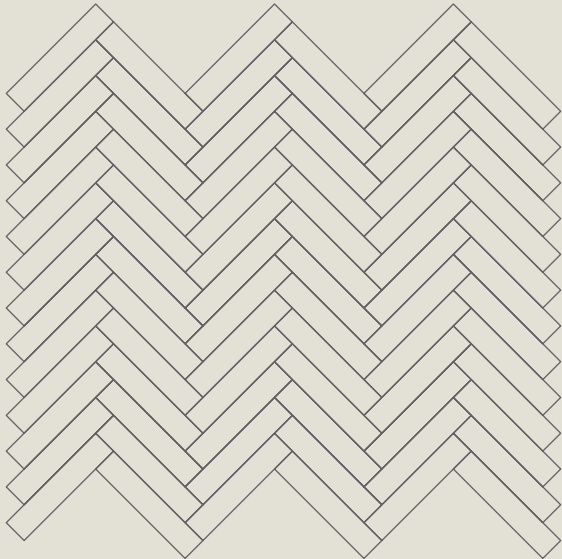
Pattern Binario | Dama | Spina italiana



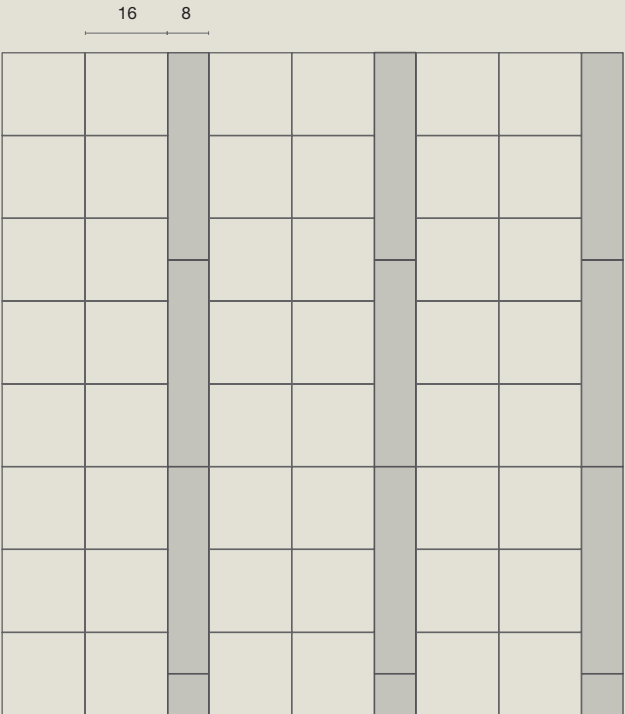
Spina Italiana 40



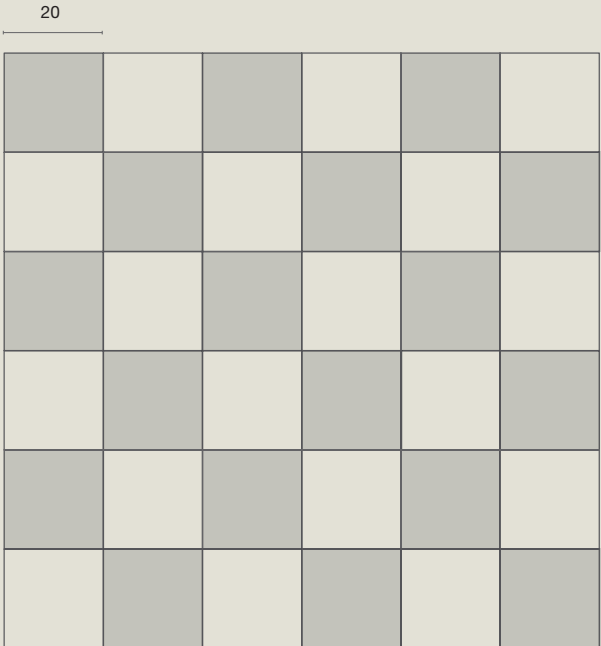
Spina Italiana 25



Binario 16



Dama 20



ANALOGICA.25

The authentic beauty of natural surfaces

MARMO
CEMENTINE
TERRACOTTA
TESSERA
COTTO

TESSERA

Mosaico in vetro riciclato ottenuto da una lavorazione artigianale
che ne esalta la matericità ed estetica.

Le 6 cromie ispirate alla terracotta, conferiscono agli spazi il
sapore mediterraneo ed elegante, permettendo accostamenti
versatili.

*Recycled glass mosaic obtained from an artisanal processing
that enhances its materiality and aesthetics.*

*The 6 colours inspired by terracotta give spaces a mediterranean
and elegant flavour, allowing versatile combinations.*



CENERE



HAVANA



VANIGLIA



CAFFÈ

The image shows a dense, repeating pattern of small, light-colored, textured squares. Each square has a slightly irregular, hand-made appearance with some fraying or uneven edges. The squares are arranged in a regular grid, creating a uniform, tactile texture. The overall color is a pale, off-white or light beige. In the center of the image, the word "LATTE" is printed in a bold, white, sans-serif font.

LATTE



NERO

TESSERA

Thickness 4 mm



Nero
1x1



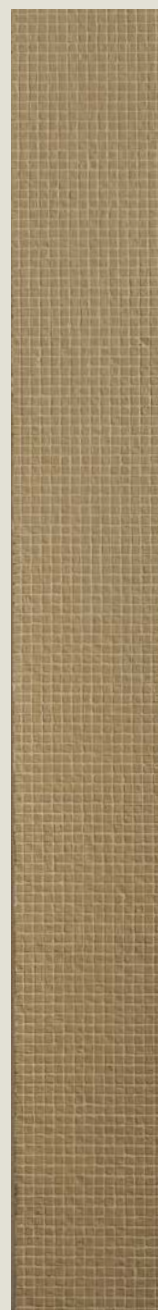
Cenere
1x1



Caffè
1x1



Havana
1x1



Vaniglia
1x1



Latte
1x1

ANALOGICA.25

The authentic beauty of natural surfaces

MARMO
CEMENTINE
TERRACOTTA
TESSERA
COTTO

COTTO

Un materiale autentico, dall'anima calda e mediterranea. Il nostro Cotto Smaltato fatto a mano è il risultato di una lavorazione artigianale che valorizza l'imperfezione, con bordi irregolari e una superficie viva, capace di riflettere la luce in modo unico.

An authentic material with a warm, Mediterranean soul. Our handmade Cotto Smaltato is the result of craftsmanship that enhances imperfection, with irregular edges and a lively surface that can uniquely reflect light.

A close-up photograph of dark, vertically oriented wood planks. The wood has a rich, dark brown to black color with visible grain patterns and some lighter, natural wood tones showing through. The planks are separated by thin, dark lines. The lighting is dramatic, highlighting the texture and grain of the wood. In the center, the words "GOLD SATIN" are written in a bold, white, sans-serif font.

GOLD SATIN

BIANCO MATT



BIANCO LUX

NERO MATT



NERO LUX

La smaltatura, proposta nelle finiture lux e matt, è disponibile nei raffinati bianchi e neri della palette MIAMILANO, il prestigioso gold satin, esclusivo nella versione lux, aggiunge luminosità e intensità, conferendo un tocco di sofisticata eleganza.

Ispirato allo stile mediterraneo, questo prodotto è pensato per ambienti interni eleganti, in cui design e matericità dialogano armoniosamente.

E' possibile sviluppare colori personalizzati, rendendo ogni progetto un'espressione autentica e su misura.

The glaze, offered in lux and matt finishes, is available in the refined whites and blacks of the MIAMILANO palette. The prestigious gold satin, exclusive in the lux version, adds brightness and intensity, giving a touch of sophisticated elegance. Inspired by the Mediterranean style, this product is designed for elegant interior environments, in which design and materiality dialogue harmoniously. It is possible to develop custom colors, making each project an authentic and tailored expression.

COTTO

Thickness 20 mm



Nero Matt - 6x30



Nero Lux - 6x30



Bianco Matt - 6x30



Bianco Lux - 6x30



Gold Satin - 6x30



Spina Gold Satin - 6x30

MIAMILANO è la nostra storia, ma anche la vostra.

Dietro ogni superficie, ogni trama e ogni dettaglio MIAMILANO, c'è una visione condivisa: creare bellezza autentica, senza tempo, capace di emozionare e di trasformare lo spazio in esperienza. Siamo partiti da un'idea semplice ma potente: dare forma alla materia con rispetto, eleganza e passione. Oggi, questo sogno si concretizza in ogni collezione, in ogni progetto, in ogni scelta che portiamo avanti.

MIAMILANO is our story, but also yours.

Behind every MIAMILANO surface, every texture and every detail, there is a shared vision: to create authentic, timeless beauty that can excite and transform space into experience. We started from a simple but powerful idea: to shape matter with respect, elegance and passion. Today, this dream is realized in every collection, in every project, in every choice that we pursue.

*Katia Brioschi
Rebecca Giani
founders of MIAMILANO*




MIAMILANO
Contemporary Home Design

MIAMILANO

Contemporary Home Design

SHOWROOM: Milano | Via Solferino, 18

 +39 02 84179422

 mia@miamilano.eu

 www.miamilano.eu

 [miamilano_brera](https://www.instagram.com/miamilano_brera)